

FLARE 4KSDI



ioi
IO INDUSTRIES

ROCK SOLID FLEXIBILITY

4KSDI

Introducing the IO Industries Flare™ 4KSDI - the first compact 4K/UHD camera head designed to fit where larger cameras cannot. But despite its size, this small form factor camera has the capability to deliver the high-quality imagery demanded by industry professionals. The extensive feature set makes the 4KSDI easy to deploy in either live event broadcasts or scripted productions.

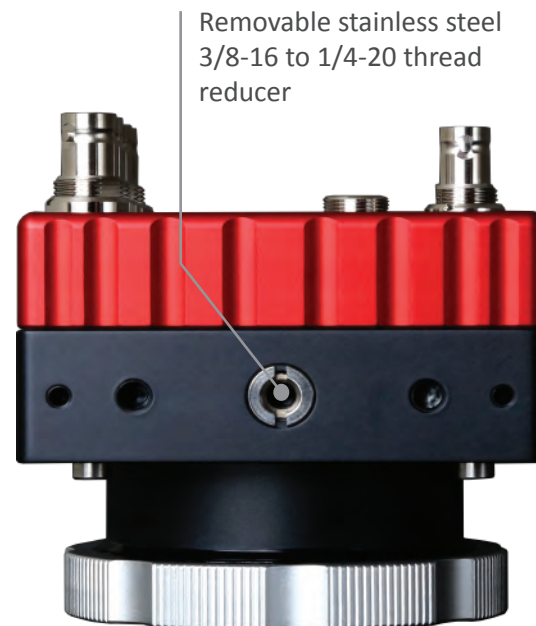
The tough aluminum chassis includes rugged mounting points on all sides, proving it really can be placed anywhere. Multiple interchangeable lens mounts are available including Arri PL, Nikon F and Canon EF, allowing a range of familiar lenses to be used. In addition, an integrated Optical Low Pass Filter helps block IR pollution and remove moiré artifacts. At the heart of the camera sits a Super 35 global shutter CMOS sensor with 12 stops of dynamic range. Four standard 3G/HD-SDI outputs make connecting the 4KSDI to peripheral devices easy. Depending on the output format, either two or four cables are needed to connect the 4KSDI to a growing selection of 4K/UHD-supported field recorders, monitors, and live production switchers. And, for stereoscopic or panoramic configurations, or live-to-air broadcasts, an HD tri-level sync reference is all that's needed for precise multi-camera synchronization.

With the Flare™ 4KSDI, the power of 4K video can truly fit in the palm of your hand.



No CCU Required:

Enable the OSD overlay using the handheld remote to control each of the camera functions. Attach to a PC or paint-box by connecting via RS485 serial cable.



Mount it Anywhere:

Centered mounting points surround four sides of the camera body. This design allows for the mounting of the camera from any angle.

SPECIFICATIONS

4KSDI

□ Sensor and Optical

Sensor Type	• Global Shutter CMOS
Sensor Size	• Super 35 (22.53 x 11.88mm)
Dynamic Range	• 12 stops
Integrated Filter	• IR-Cut and OLPF

□ Color Science

Neutral/White Balance	• Manual • Temperature Presets • 1-Shot Auto • Tracking Auto
Color Correction	• Matrix Adjustment • Saturation
Gamma	• Rec. 709, Cine Log • Black Gamma
Custom LUT	• (6) RGB LUTs • (4) RAW LUTs
Exposure/Shutter Control	• Manual • Automatic
Sensitivity Adjustment	• ISO control • Up to 4x digital gain
Level Control	• Master Pedestal • Knee Level and Slope

□ Output

Quad-Link Formats

10-bit 4:2:2 or RAW

- UHD 23.98, 24, 25, 29.97, 30, 50, 59.94, 60
- 4K 23.98, 24, 25, 29.97, 30, 47.95, 48, 50, 59.94, 60

10-bit 4:4:4

- UHD 23.98, 24, 25, 29.97, 30
- 4K 23.98, 24, 25, 29.97, 30

Dual-Link Formats

10-bit 4:2:2 or RAW

- UHD 23.98, 24, 25, 29.97, 30
- 4K 23.98, 24, 25, 29.97, 30

□ Interface

Video Output	• 4x 3G/HD-SDI (4x BNC)
Image Mapping	• Quadrant (SMPTE 425-5) • 2-Sample Interleaved (SMPTE 425-5)
Camera Control	• Handheld remote (OSD) • RS-485 (open protocol)
Synchronization	• Tri-level Sync w. user offset (1x BNC)

□ Mechanical/Electrical

Dimensions	• 92.7 x 92.7 x 47.7mm (not including lens mount)
Weight	• 750g (not including lens mount)
Power	• 7-19V DC (10W max.)
Temperature	• Recommended operation: -30°C to 40°C • Storage: -30°C to 60°C

LENS MOUNTS

4KSDI

Passive Lens Adapters



CANON EF Mount



NIKON F Mount



ARRI PL Mount

Active Lens Adapter



CANON EF Mount

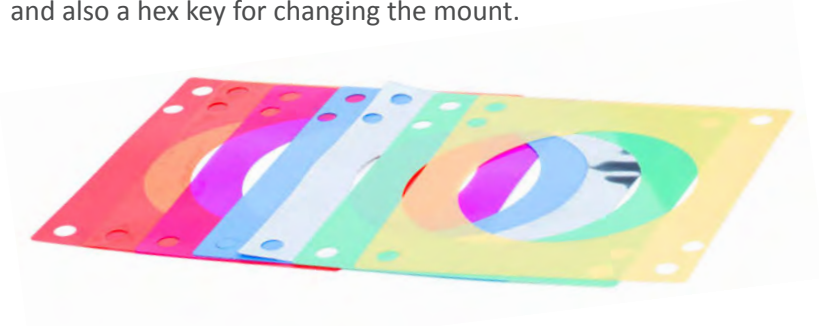


4KSDI shown with Fujinon Cabrio lens

Interchangeable Mounting System

The 4KSDI camera uses an interchangeable mounting system, which allows the camera operator to switch between lens mounting types. Additional lens mounts are offered as accessories from IO Industries, and also provided by third party vendors.

Each of the passive mounts from IO Industries includes (7) back-focus shims, and also a hex key for changing the mount.



The following shims are included with each passive mount:

- 0.0127mm / 0.0005" (Silver)
- 0.0254mm / 0.001" (Amber)
- 0.0381mm / 0.0015" (Purple)
- 0.0508mm / 0.002" (Red)
- 0.0762mm / 0.003" (Green)
- 0.1016mm / 0.004" (Tan)
- 0.1270mm / 0.005" (Blue)

Tools Included

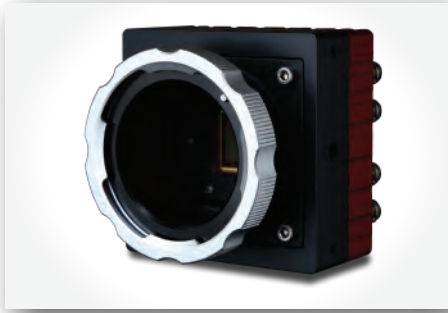
A hex key and stainless steel cap screws are included with each passive lens mount.



ACCESSORIES

4KSDI

Included with the 4KSDI (P/N: 4KSDIKITxx-y)



4KSDI Camera Head

- Includes one passive lens adapter
- y = E, F, P



P/N: FLARESDIRMT

- Handheld remote
- Controls OSD



P/N: CABFLAREBATT

- Power/control cable
- Lemo, D-Tap, Hirose



P/N: ACPWRTAPxx

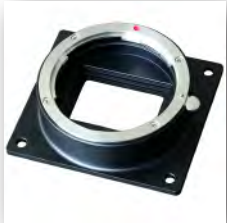
- AC-DC adapter
- xx = NA, EU, UK



P/N: CABUSB4852M

- 2m USB control cable
- PC control interface

Additional Lens Mounts



P/N: 4KLENSMOUNT-E

- Passive EF-Mount



P/N: 4KLENSMOUNT-F

- Passive F-Mount



P/N: 4KLENSMOUNT-P

- Passive PL-Mount



P/N: 4KLENSMOUNT-A

- Active EF-Mount
- Includes replacement CABFLAREBATT
- Control via handheld remote or serial

Cabling



P/N: CABLEMO3M

- 3m RS485 extender



P/N: FLAREPWRHR

- 12-pin connector

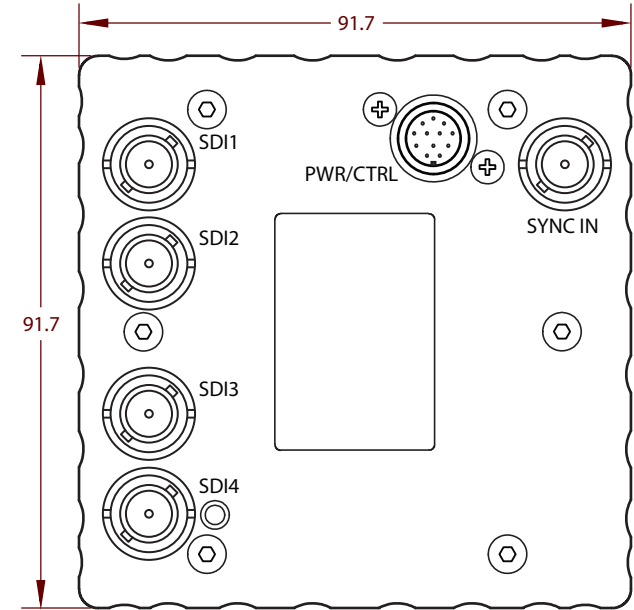
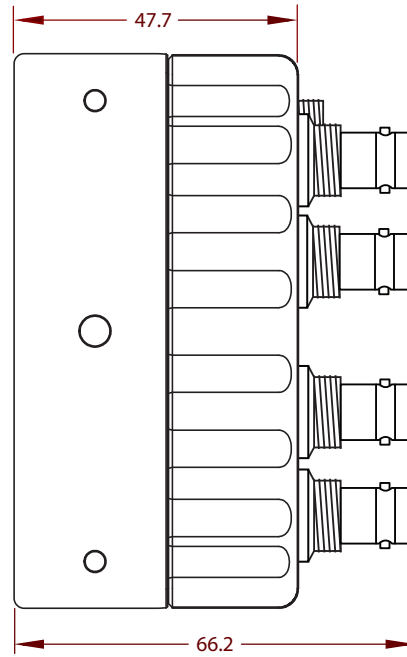
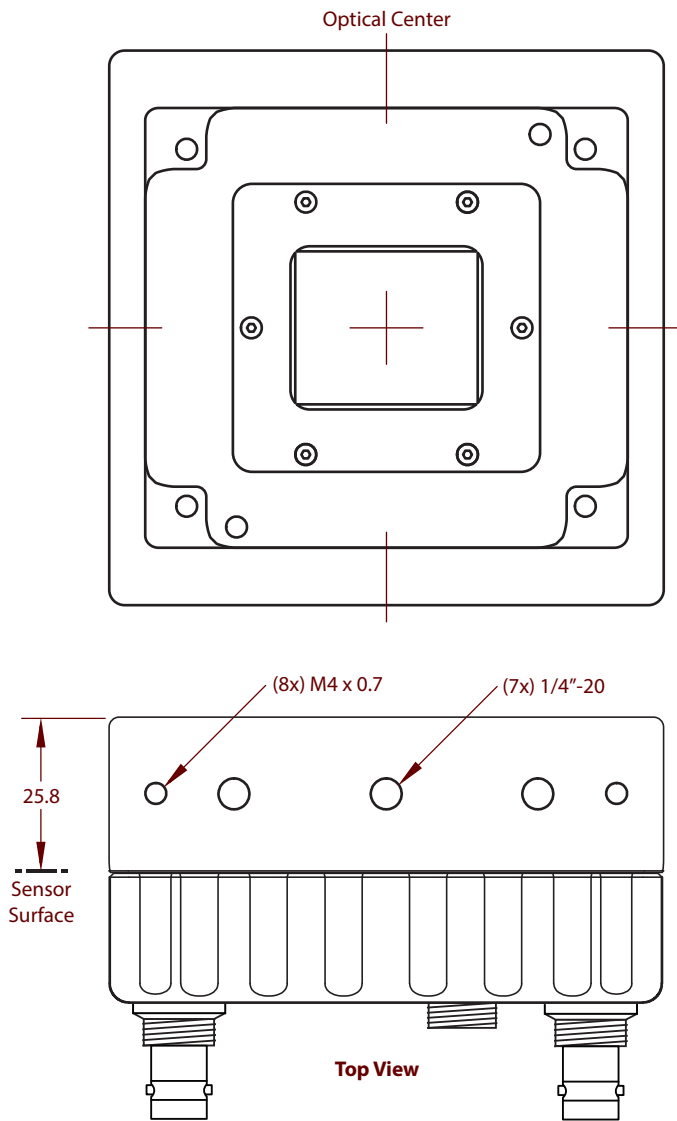


P/N: CABUSB4855M

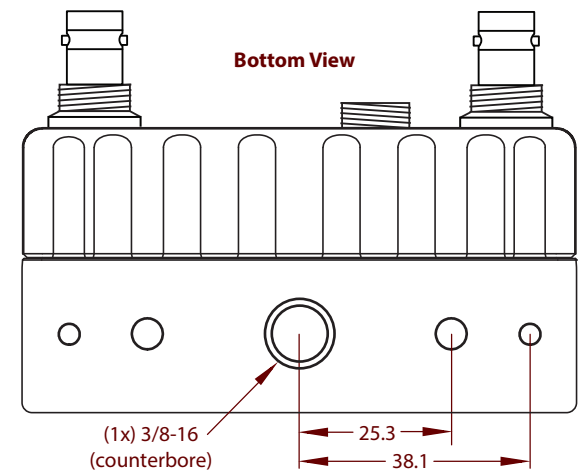
- 5m USB control cable

DIMENSIONS

4KSDI



Camera body is shown without a lens adapter, and without 3/8-16 to 1/4-20 thread reducer.





IO Industries Inc.
12-1510 Woodcock St.
London, ON N6H 5S1
CANADA

sales@ioindustries.com
1 (519) 663-9570

www.ioindustries.com/ProVideo